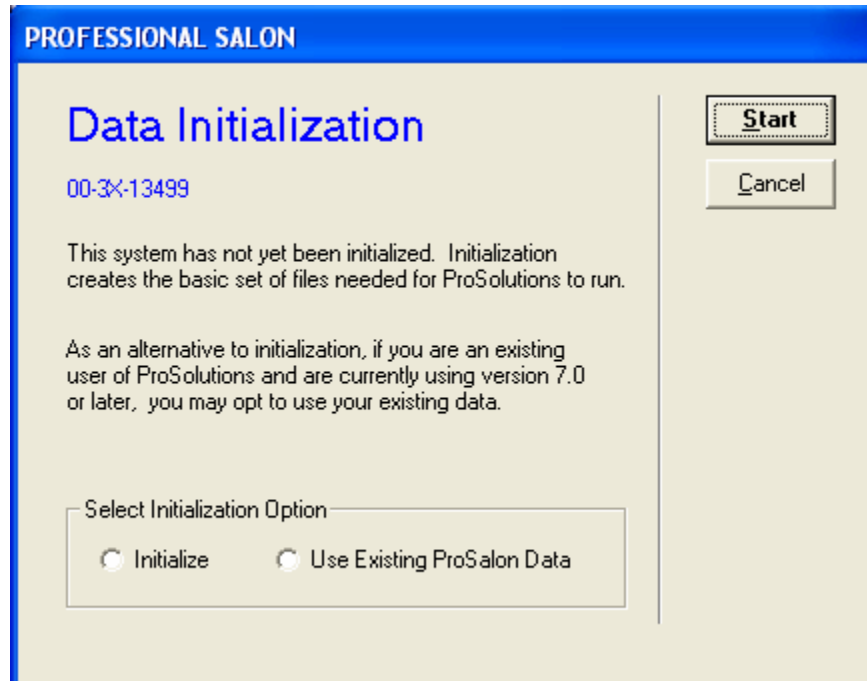
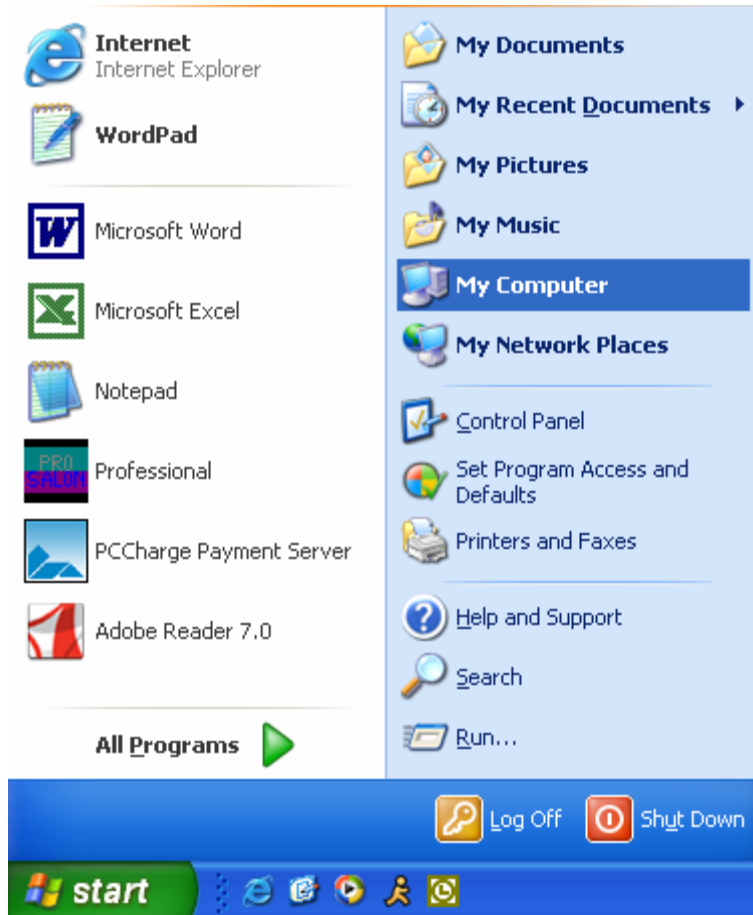


Data Initialization

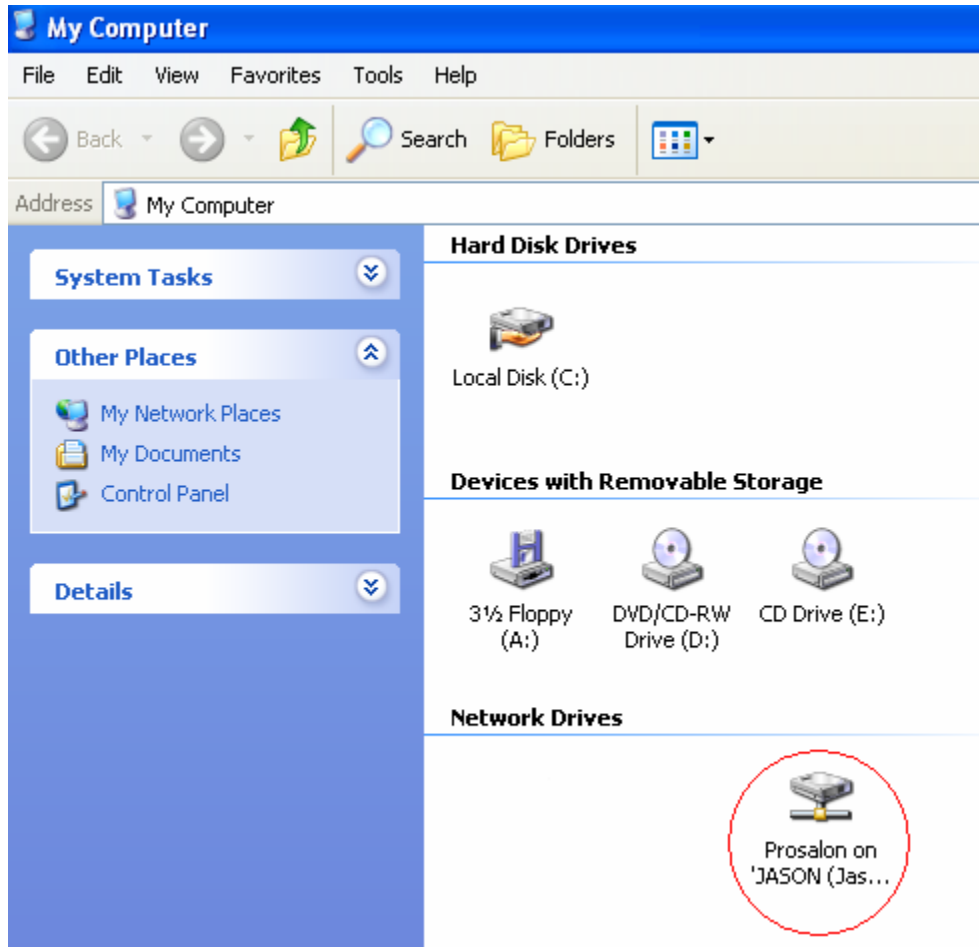
The first step when getting data initialization is to CANCEL out of any and all messages, do not try to initialize the software.



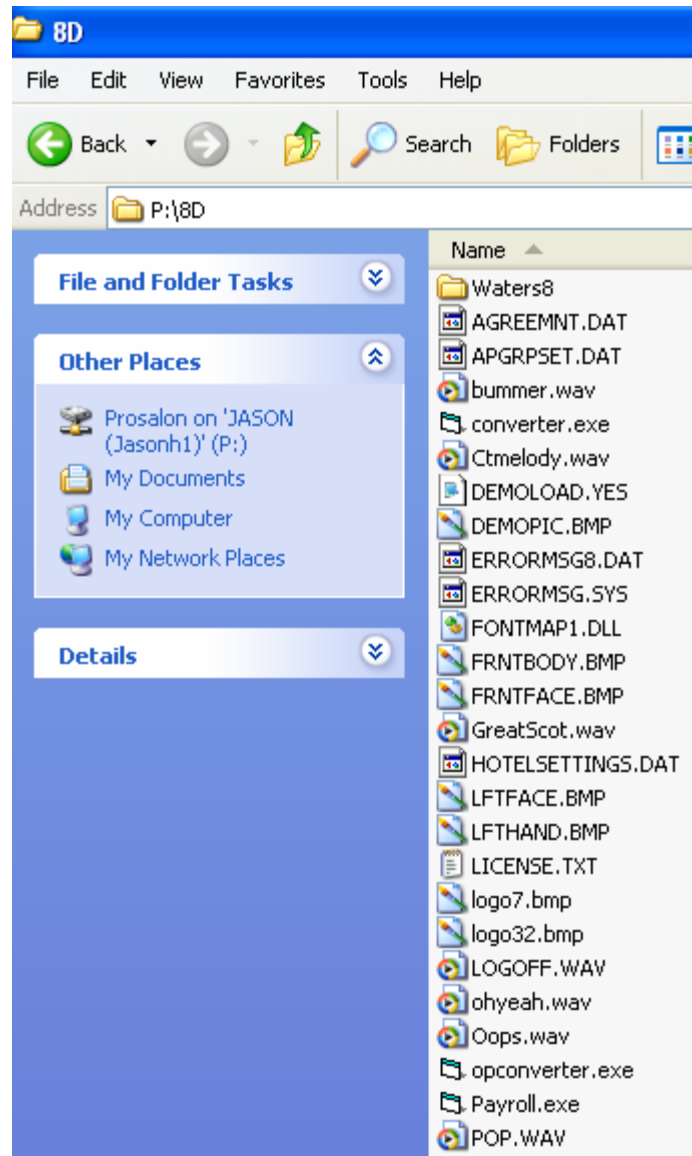
When getting the data initialization screen on the workstation click your start button and then click on your my computer icon.



You should have a network drive that either says Prosalon, or Data, on (the name of your server.)



Now once you have located your mapped drive, double click on it. A window should appear that has a bunch of files inside.



If you get an error message when double clicking on your mapped drive this means that your network is down. At this point in time it would be best to check if all of your network cables are plugged in and all of your hardware is turned on. If all of your cables are plugged in and all of your hardware is turned on then you need to call your network tech because your network is offline.

This document was created with Win2PDF available at <http://www.win2pdf.com>.
The unregistered version of Win2PDF is for evaluation or non-commercial use only.
This page will not be added after purchasing Win2PDF.