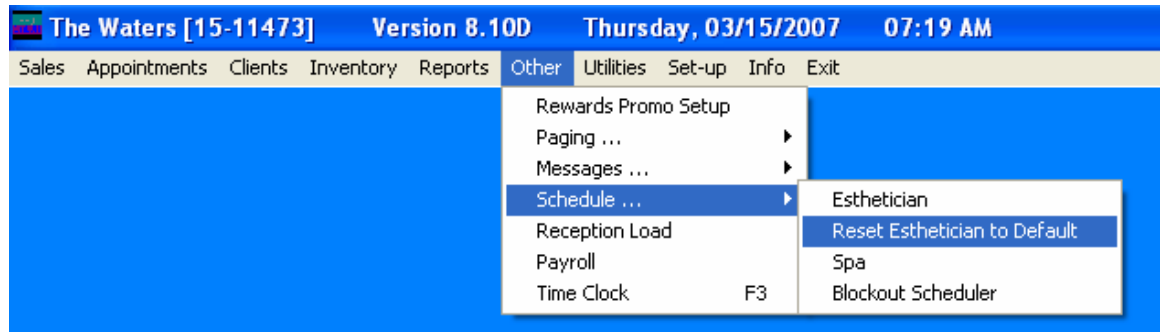
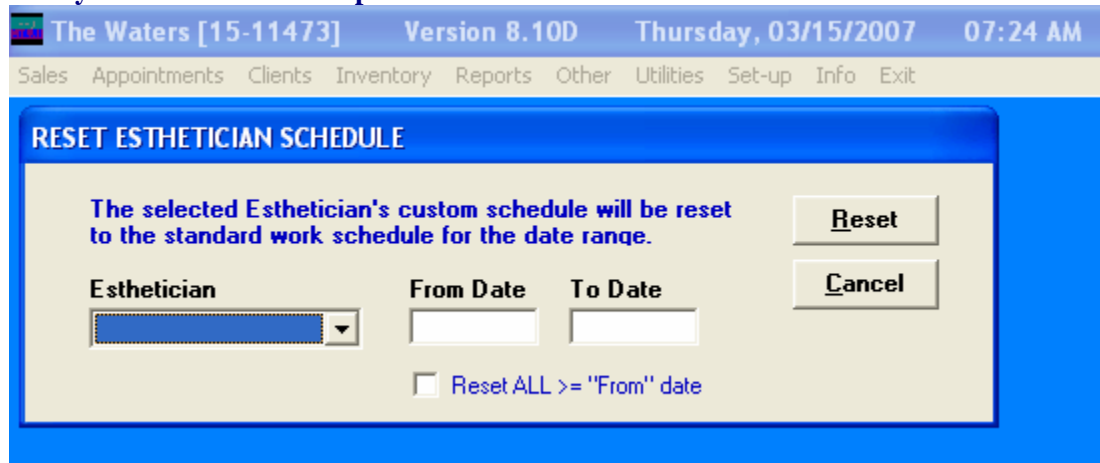


Reset operator schedule to default

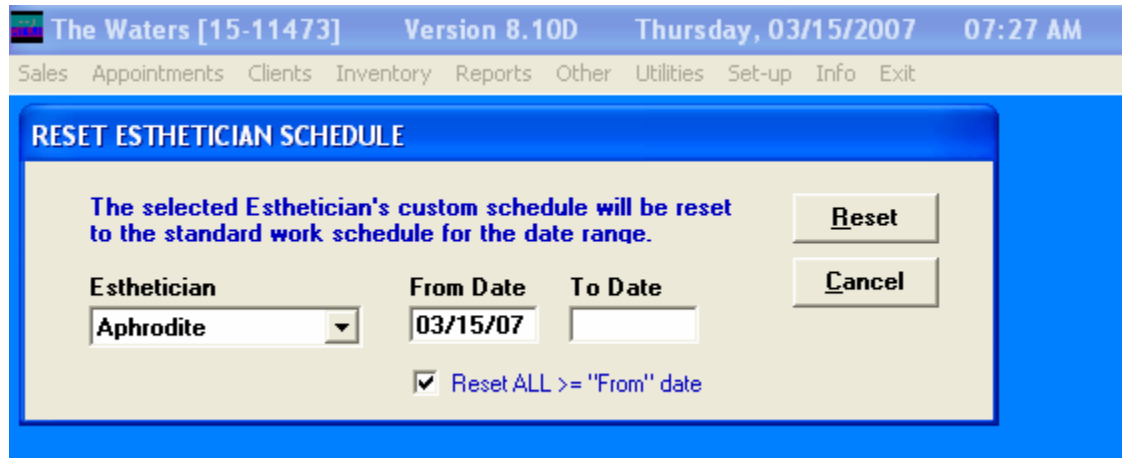
1. To reset an operators schedule go to Other from the main screen.
2. Then Click on schedule and then reset operator/Esthetician to Default.



- 3.
4. Next you will see the reset operator schedule window.



- 5.
6. Chose which operator that you want to reset. Click your mouse in the from date. Then put a check in Reset ALL>"From" date. Do not put anything in the To date field. Then click on Reset.



- 7.

This document was created with Win2PDF available at <http://www.daneprairie.com>.
The unregistered version of Win2PDF is for evaluation or non-commercial use only.